



MOTTO: TRUST IN GOD

**WIDOWS AND ORPHANS MOVEMENT**

---

# **2020 ANNUAL REPORT**

---



## **TABLE OF CONTENTS**

---

<b>2020 highlights (Gallery)</b>	<b>1 - 4</b>
<b>Director's Message</b>	<b>5</b>
<b>The Board</b>	<b>6</b>
<b>Staff &amp; Management</b>	<b>7 - 8</b>
<b>List of Partners</b>	<b>9</b>
<b>WOM at a Glance</b>	<b>10</b>
<b>Programmes, Projects &amp; Activities</b>	<b>11 - 18</b>
Emergency Response Interventions	11
Flood Victims	12
Human Rights	13 -14
Economic Empowerment	14 -15
Education	16
Climate Change; Special Housing Initiative	16 -17
Atarrah Ghana Limited	17 -18
<b>Achievement &amp; Success stories</b>	<b>19 - 22</b>
Zamisataaba-yem Women Group; Active Citizens of Dapore	19
Family Relief	20
PROMIC funded by SWISSHAND: Hawa's Success Story	20 -21
A happy Bread Winner	22
<b>Challenges &amp; Way forward</b>	<b>23</b>
<b>Financials</b>	<b>24 - 25</b>
<b>Appendix</b>	<b>26 -27</b>





■ Bongo beo women group keenly listening to radio Grune 99.3fm this morning at 11:20 am as we discuss sexual and Gender Based violence. CHRAJ was with them to further clarify issues on the topic.















■ Donations to women sponsored by Love4Africa



■ A good samaritan donated 5 bags of corn to WOM. The corn was sent to Anateem, sumbrungu and kandiga widows groups.



## MESSAGE FROM THE NATIONAL DIRECTOR

---



Fati Abdulai

The Widows and Orphans Movement (WOM) started the year 2020 with great hopes and expectations. By the end of the first quarter March, 2020, uncertainty became the order of the day. Field work came to a standstill for almost three (3) months due to COVID-19 restrictions. Cost of carrying out interventions soared high because of the need to provide personal protective equipment and supplies (PPES) as well as incorporate other safety measures.

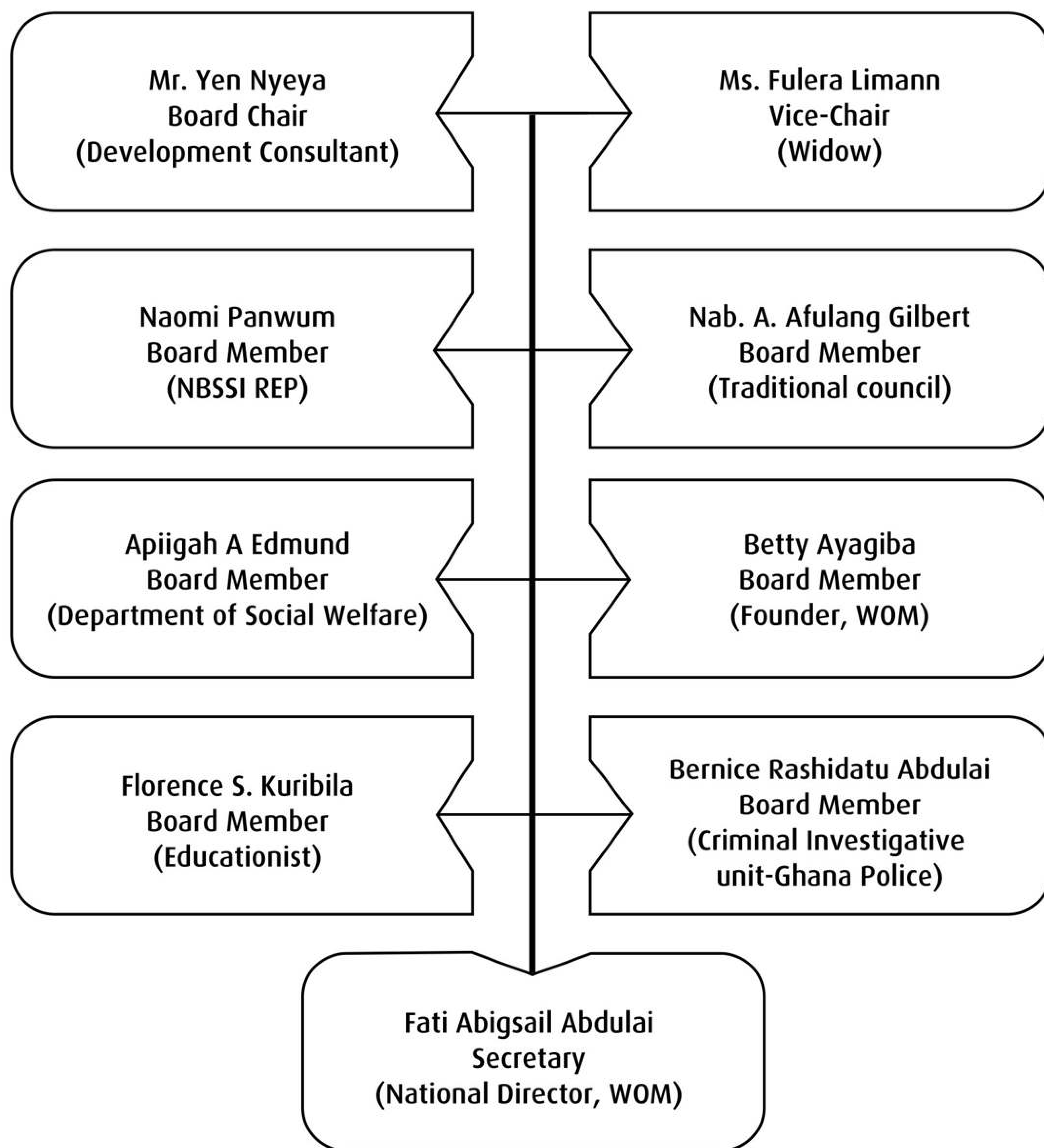
This did not stop our constituents from reaching out to us as our work became even more relevant during these times. Abuse of women and children did not cease with the presence of the pandemic but rather increased. Many support services for survivors became very difficult to access. Health facilities marshalled all their energies to fighting COVID-19. Already there was an acute lack of safe spaces for women and children who were survivors of sexual and gender-based violence or at risk of becoming so. The Domestic Violence Support Units country wide were inadequately staffed, financed and resourced. In short, the ongoing national failure to put the appropriate systems in place to address SGVB substantively, highlighted the importance of WOM's work

The "ENOUGH Project" which focused on ending sexual and gender-based violence (SGBV) was timely in supporting WOM address issues of SGBV. Equally, the Women Voice and Leadership project supported WOM to implement critical interventions that were appropriately gendered to address COVID-19 in the Bolgatanga East and Nabdam Districts.

The ever-hard-working staff of WOM made 2020 a success amidst all the challenges. They and the Board continue to stay committed to the cause. Our partners, donors, and volunteers both home and abroad remain to be the reason why we are able to do the things we do.

Together, we are inspiring socio cultural and economic transformation and do not intend to pull the breaks any time soon.

## THE BOARD





## STAFF AND MANAGEMENT

A number of trainings were organised for staff of WOM in 2020 to strengthen the skills of staff. They included: trainings on how to document change stories, fire safety and first aid.



■ *Staff undergoing fire safety training*





## STAFF AND MANAGEMENT





# LIST OF PARTNERS

## PARTNERS



## ACADEMIA & RESEARCH PARTNERS



## NETWORK





## WOM AT A GLANCE

The Widows and Orphans Movement (WOM) was formed in 1993 and registered in 1999.



We have reached **12,735 WOMEN**  
**in 160 COMMUNITIES** across  
Northern Ghana

● Total of 160 Widows groups

● 13395 members across Ghana

### VISION

WOM is the leading women's rights organization in Ghana working with others to see a Ghana that promotes, upholds and protects the rights and dignity of Widows and Orphans, ensuring socio-cultural and economic justice for all.

### MISSION

To initiate and facilitate processes and programmes to empower widows and orphans economically, socially and spiritually

### AREAS OF FOCUS



Human Rights  
(Widows, Orphans  
& Women)



Education



Economic  
Empowerment



Climate  
Change



Formally registered in 2017, Atarrah Ghana Limited (AGL) is WOM's social enterprise using resources indigenous to West Africa, such as Baobab & Shea. Atarrah produces several safe and healthy products

[www.womgh.org/shop](http://www.womgh.org/shop)



## PROGRAMMES, PROJECTS & ACTIVITIES

### EMERGENCY RESPONSE INTERVENTIONS

During the year in review, the Upper East Region, experienced two major emergencies. The first was the emergence of the global COVID-19 pandemic which slowed down the economy, hitting the most vulnerable in our societies the hardest. Intense flooding which inundated many of the districts of the Upper East Region was the other emergency. Many were rendered homeless, hardships increased and poverty was deepened.

To enhance the resilience of widows and orphans in the Upper East Region, WOM and OXFAM in Ghana, supported four hundred (400) widows and orphans comprising three hundred and ninety (390) widows and ten (10) orphans with ten kilos(10kg) of rice, two (2) litres of oil and a nose mask. One hundred people were reached in the Bolgatanga municipality as well as the Bongo, Talensi and Nabdam Districts.

It is worth noting that 84.7% of the people reached were not beneficiaries of the Livelihood Empowerment Against Poverty (LEAP) programme though they meet the criteria and need to be enrolled on to the scheme.



Equally, WOM and the Nabdam District Assembly were supported to develop Emergency Preparedness Plans. These plans will enable each outfit to prevent and/or reduce the impact of future emergencies as well as tackle them when they occur, safeguarding life and property.

As part of the WOM-Plan International Ghana partnership with funding support from Global Affairs Canada under the Women Voice and Leadership Project (WVLP), COVID-19 awareness creation protocols and its impacts on unpaid care work burden was recorded in Grune and broadcasted in three (3) of the partner districts.



## PROGRAMMES, PROJECTS & ACTIVITIES

The broadcast took place in, Zuarungu (Bolgatanga East), Pelungu and Kongo (Nabdam) markets on markets days to increase awareness of COVID-19 and change behaviours in regards to hygiene and prevention

### FLOOD VICTIMS

WOM and the National Management Disaster Organisation (NADMO), with funding support from OXFAM in Ghana, selected three (3) communities in three (3) Districts that were hardest hit by the floods.

Two hundred and seventy 270 households across Bolgatanga and Builsa North municipal as well as the Pusiga District were reached. In all Sixteen percent (16%) of the people reached were male headed households while 84% were female headed households. On average, a household received a 5-kilo bag of rice, 20kilos bag of maize, two tins of canned fish and three (3) tins of tin-tomatoes.



■ Flood victims receive food support



### **HUMAN RIGHTS - Widows, Orphans & Women**

Deepening widows and orphans' knowledge of their rights and strengthening their capacity to demand these rights was a central part of WOM's work. This work was made possible via partnerships with Action Aid Ghana (AAG), OXFAM in Ghana, WILDAF Ghana, Plan International Ghana, the Network for Women's Rights in Ghana (NETRIGHT)

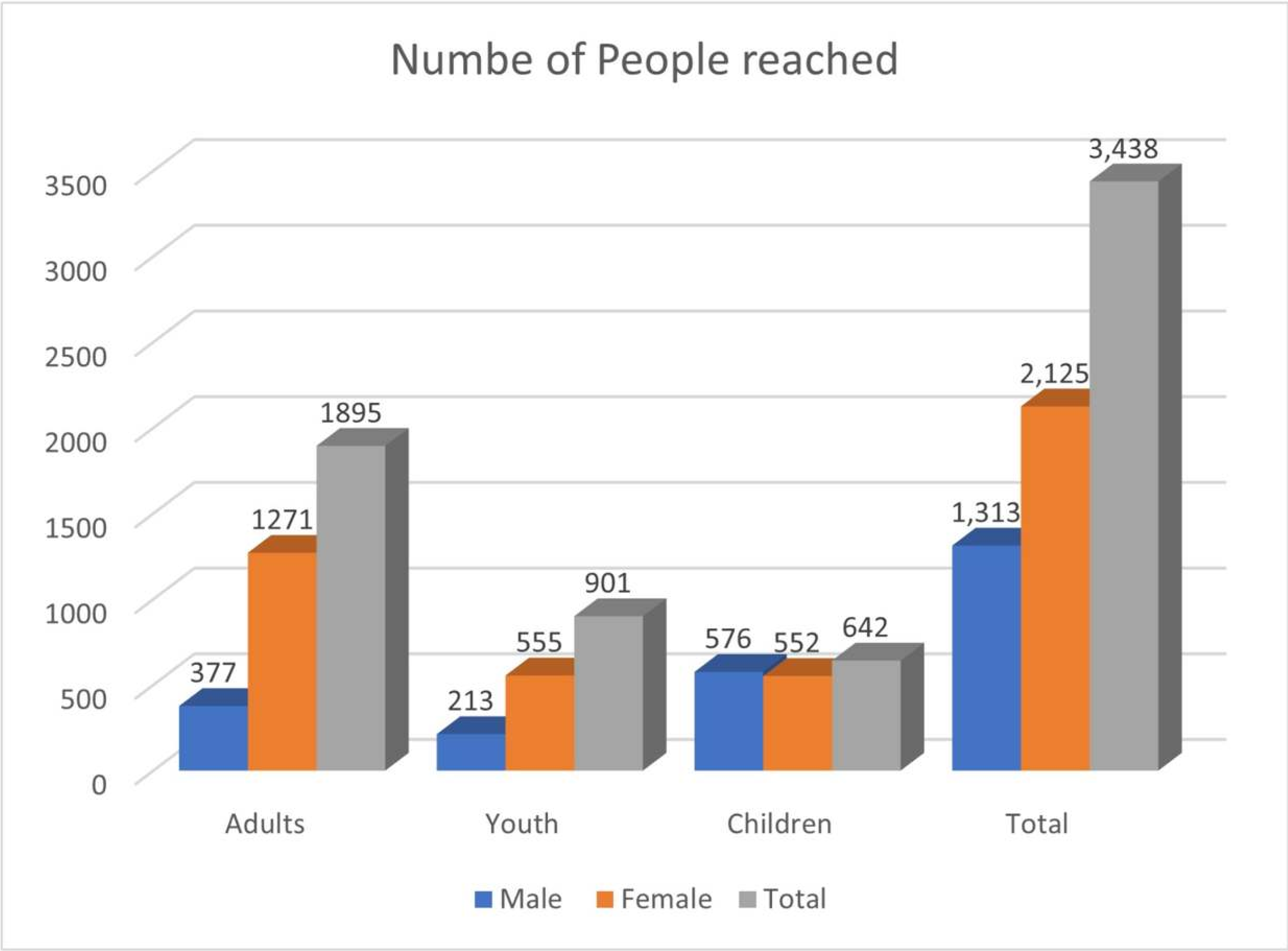
To advance our work that seeks to end Sexual and Gender Based Violence (SGBV), WOM-OXFAM in Ghana and WILDAF Ghana commenced a four (4) year project titled "Enough! Empowering women, girls' boys and men to take positive action in ending SGBV in Ghana, Liberia and Mali". This project is funded by the European Union. WOM worked with male and female traditional and religious leaders, men, boys, girls and women in the Bongo and Nabdam Districts to champion against SGBV.

The WOM-NETRIGHT partnership with funding support from the African Women Development Fund (AWDF) facilitated processes that increased the learning among District Assembly staff and Department of Agriculture staff on effective strategies to roll out the Gender and Agricultural Strategy Two (GADS II). Our work also supported 10 women in the Bawku West District sign tenancy agreements with land owners to access agricultural lands for comparatively longer periods (5 to 10 years), thus, improving security of access to land.

WOM-AAG worked to strengthen the widows' group in the Talensi and Nabdam Districts. Forty percent (40%) of the groups were trained in group dynamics. The rest of the planned interventions for 2020 were put on hold. The fund was used to purchase and supply community members with food items and PPES.

Lastly, during 2020, the number of sponsored children totalled 888 children (456 boys and 432 girls) across 21 communities in the Talensi and Nabdam Districts.





An estimated number of 10,000 people were equally reached through radio and public address systems across five (5) districts.

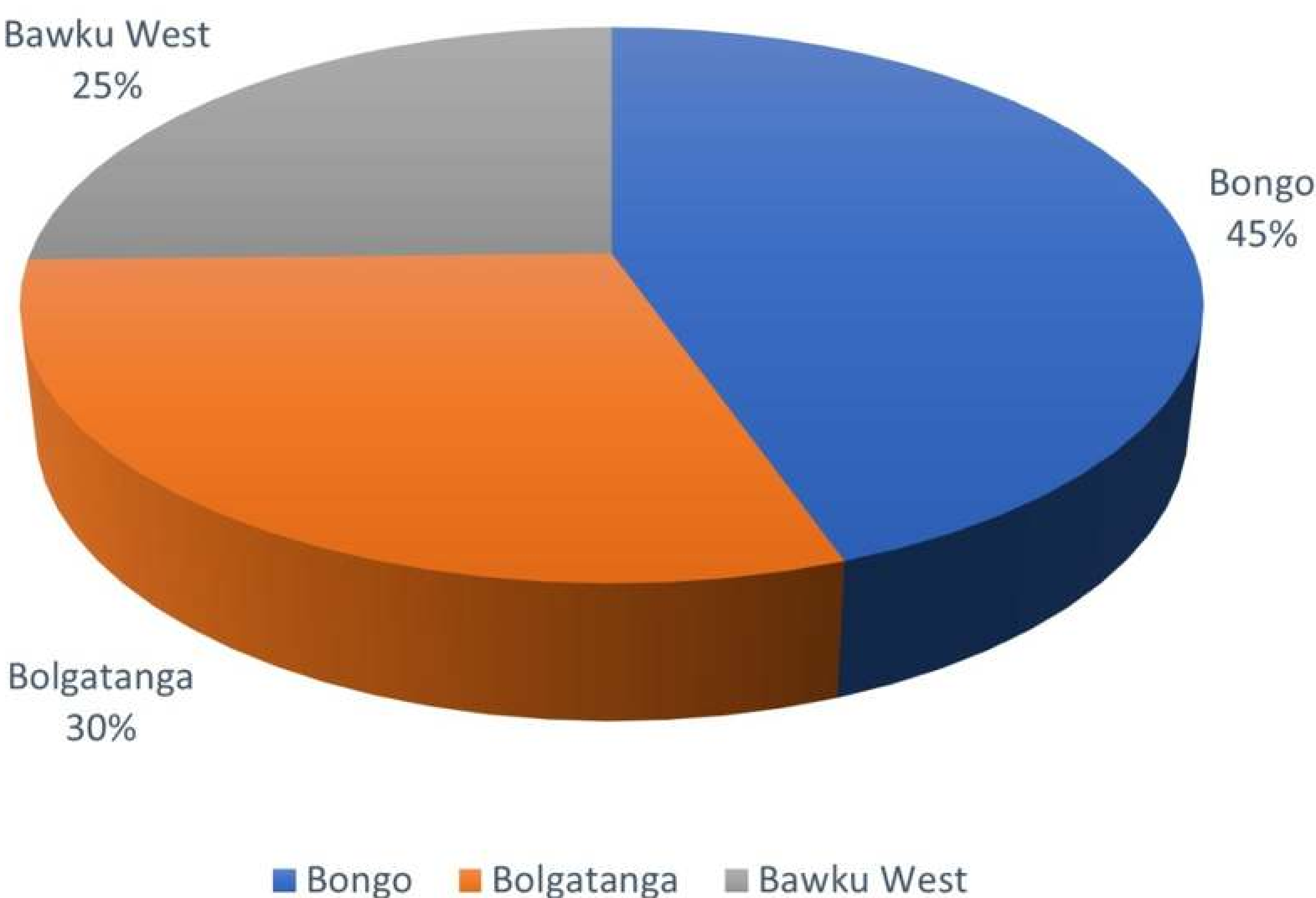
ECONOMIC EMPOWERMENT

Promoting Micro-enterprises for efficient Poverty Reduction (PROMIC) Programme

Three PROMIC Programmes (Bolgatanga, Bongo and Bawku West) were managed by WOM with support from SWISSHAND in 2020. Cumulatively, the programmes reached a total of eight hundred and forty-five (845) women. Seventy four percent (74%) of whom are widows. A total amount of six hundred and thirty-one thousand, four hundred and fifty cedis (GH¢631, 450.00) was disbursed to women to start and or grow their businesses. On the average these women received seven hundred and fifty Ghana cedis (GHC750.00)



LOANS DISBURSED TO WOMEN, 2020



In partnership with WaterAid Ghana (WAG), WOM trained 21 women from the Bongo and Kasena-Nankana West districts in liquid and bar soap production. This measure was to promote hygiene through the washing of hands with soap at the community levels to help combat COVID-19 and provide a source of income to these women in the community. Currently, all the women trained and using their newly acquired skill in their communities.

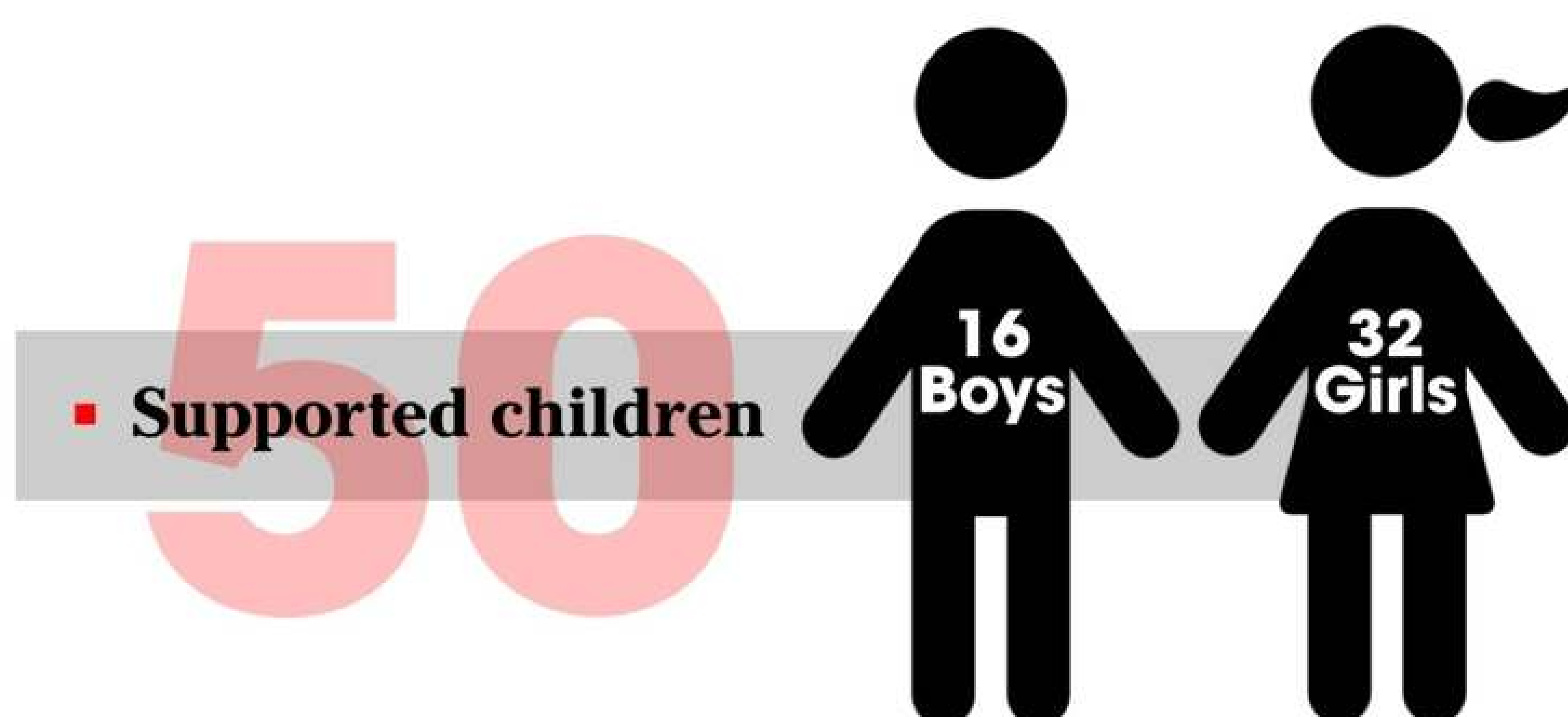


■ Gifty Bayinekumu and Jessica Anaati of Adungo community in the KNWD teaching their colleagues some of the processes the learnt



### EDUCATION

A total of Fifty (50) people comprising sixteen (16) boys and thirty-two (32) girls were supported to either learn a vocation, buy food, uniforms or transport themselves to school. This was made possible by the kind support of our individual donors and Paul e.V of Germany.



### CLIMATE CHANGE: Special Housing Initiative (SHI)

Eighteen (18) women were supported under the Special Housing Initiative. This was made possible by the kind support of Burgerkomitee Steinhagen, Paul e.V, and Stitching Zaare.



■ Hawa Akolga standing in front of her rebuilt room at Yikene community in the Bolgatanga Municipality





■ Visually impaired Abasiya Ayampoka happy she now has a roof over her head (her room was rebuilt)

### ATARRAH GHANA LIMITED



Much like many small businesses, WOM's social enterprise, Atarrah Ghana Limited (AGL) was also victim to the challenges of COVID-19. While Atarrah was able to quickly adapt and start manufacturing hand sanitizers, sales dipped drastically in 2020.

The COVID-19 restrictions and protocols meant that, most of AGLs clients had closed down their shops and businesses.

However, with the support of Bailey Russel, two (2) women groups in the Kandiga and Dorungu Communities were supported with a Donkey and a cart each to reduce the drudgery associated in mobilising raw material.





■ *Dorungu widows group receive a Donkey and a cart*



■ *Kandiga Widows group receive a donkey and a cart*



# ZAMISATAABA-YEM WOMEN GROUP. *ACTIVE CITIZENS OF DAPOORE*

WOM & Action Aid Ghana (AAG) as part of the Promoting Opportunities for Women Empowerment and Rights (POWER) project worked with the Zamisataaba-Yem women group of Dapoore in the Talensi District. This group over the past seven years, benefited from various trainings on advocacy. This has made members of the group assertive which led to the group engaging with the member of parliament (MP) of their constituency (Hon. B. T. Baba) on a number of issues. The group sought his support for the approval of the Land bill in parliament and requested for a borehole for their community. The MP said

“

I am impressed by the level of knowledge and understanding of your rights especially the land bill and its importance to women. I will give my full support for the passage of the bill and will ensure that I convince some of my colleague parliamentarians to support its approval. I will also ensure that the bore hole you have requested for, is installed at a place of your choice

The Land bill has since been passed into an Act and the bore hole has been installed. Apokoke Azoya a thirty-four (34)-year-old woman and a member of the Zamisataaba-Yem group says

“

“being able to have a one on one meeting with a Member of Parliament (MP) as women is very difficult. But we have been

able to engage him and pushed for a borehole in our community. This borehole will help so much to reduce the time we spend in fetching water from far places. We can spend the rest of our time engaging in activities that will earn us some money.”



■ *Hon. B T Baba Member of Parliament for Talensi District (in smock) with a section of Zamsitaaba-Yem group members*



■ *Apokoke Azoya, a member of the group fetching water from the borehole installed by the MP*



### Family Relief

Prince Sorim a sponsored child from Yagzore in the Talensi District is 16 years old and from a family of six (6).

His parents are peasant farmers. Unfortunately, they do not produce enough food to feed the family for the entire year. Therefore, Prince his siblings relied on the meals provided in school as part of the school feeding programmes for lunch.

Their plight was worsened when schools were closed from March to December, 2020 as part of COVID-19 restrictions in Ghana. Prince says that AAG & WOM supported him with food items and PPEs as part of their COVID-19 response. This food supplemented his family's food needs.

He adds;

“

I was not happy when I could not support my family in the tough times since am still a child. However, I became excited and grateful, when some support came to my family just because I am part of the sponsorship programme. I will work harder in school, so that I do not disappoint my sponsor

*Promotion of Micro-Enterprises Programme (PROMIC) funded by SWISSHAND*

### Hawa's Success Story

Forty-nine (49) year old Hawa Akeliba is a widow from Zebilla in the Bawku West district of the Upper East Region. She has five (5) children. Two (2) of whom are boys and three (3) girls. Ms. Akeliba was introduced to PROMIC by a colleague.

She has since been a client for almost three (3) years. She says that, her profit margin has increased by 300% and her asset worth is about GH¢6,000.00 from a baseline of just GH¢2,000.00 over the period. This happened because, she is able to source her goods at a cheaper price now, as compared to when she did not have credit. Again, she is able to diversify her produce giving her a competitive



## ACHIEVEMENTS & SUCCESS STORIES

advantage. Madam Hawa Akeliba has since organised her colleagues into a group called 'ATIELTAABA WIDOWS GROUP' to equally benefit from the Programme.



■ *Hawa Akeliba in front of her wares*

“

**I am better placed to care for my children in Junior high and Senior high school. But more importantly, I am able to pay for the fees, rent and basic needs of my third child who is pursuing a degree course at the University of Cape Coast.**



### ■ A happy bread Winner



■ *Ms. Atiazure Awoore  
weaving a basket*

Ms. Atiazure Awoore hails from Asaloko in the Bongo District of the Upper East Region. She has six (6) children, four (4) girls and two (2) boys. She is a basket weaver who wove a maximum of two baskets in a month. As the bread winner of her family, she struggled to care for the family. As such, the family ate twice a day instead of thrice and had difficulty in renewing their National Health Insurance cards (NHIS).

In 2019, the group she was part of called Noyine Guneserrum accessed the micro-credit scheme run by WOM and SWISSHAND. She took a loan amount of GH¢300.00 and used it to buy more straw which allowed her to weave ten (10) baskets in a month.

Ms. Awoore says that, this has brought much relief to she and her family. Her family now affords three square meals a day and she is able to renew her NHIS and that of her children. Her children no longer wear unapproved uniforms to school. She expressed her gratitude and appreciation to WOM and SWISSHAND for the support.



## **CHALLENGES & WAY-FORWARD**

---

### **CHALLENGES**

The intrusion of COVID 19 in March, 2020 coupled with the floods in the Upper East Region worsened the plight of the widows in the region. While some of the women lost their businesses, others had to adapt quickly and diversify to survive. Amidst all these, violence against women and girls continued.

These and many more have eroded most of the past gains attained in the fight for women's human rights. WOM and many like-minded organisations therefore need to double their efforts in coming years.

### **WAY-FORWARD**

WOM remains poised in raising additional funds for the implementation of its strategic plan. Constructing WOM's office near its training centre in Pusu-Namongo is a priority for 2021. Despite the challenging economic context, WOM believes that this facility will provide the needed environment to serve our clients better by promoting privacy, enhancing safety of all and reducing cost of rolling out our programmes in the long term. The Board will embark on local and international fund raising to make this a reality.

WOM continues to be hopeful for the future and looks forward to carry forward with the progress it has made thus far. While the impact and effects of COVID-19 will remain in 2021, WOM will work closely with its partners, donors and beneficiaries to ensure that the best service and support is being provided.



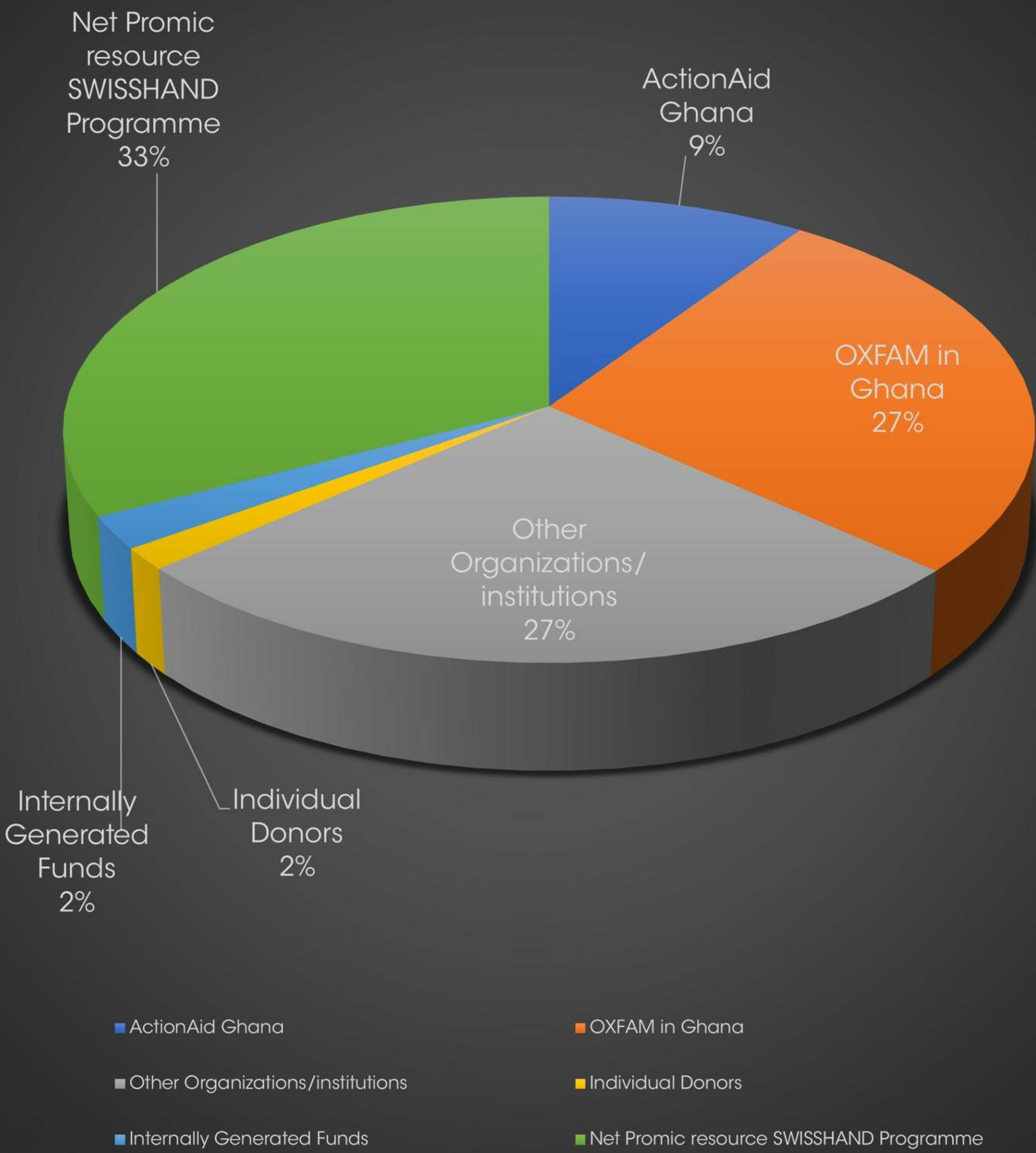
## INFORMATION ON WOM'S 2020 FINANCIALS

### Source of Funds, 2020

Name of Organization/Institution/Donor	Amount (GH¢)	% of Funds	Project Area & Activities
ActionAid Ghana	108,178.15	14.1%	See Appendix 1
OXFAM in Ghana	308,469.14	40.2%	See Appendix 2
<b>Other Organizations/Institutions</b>			
St. Paul e.V	58,246.40	7.6%	Education/Vocational Skills
WaterAid Ghana	29,414.63	3.8%	Education/Vocational Skills
Church of Pentecost	20,000.00	2.6%	Education/Vocational Skills
Stitching Zaare	18,000.00	2.3%	Special Housing Initiative
NETRIGHT	43,240.15	5.6%	Women Economic Emp.
World Connect	28,219.21	3.7%	Women Economic Emp.
LOV4AFRICA	30,010.00	0.1%	Food
Burgerkomitee Steinhagen	40,144.00	5.2%	Special Housing Initiative
PLAN International Ghana	69,152.91	9.0%	See Appendix 3
<b>Total Other Organizations/Institutions</b>	<b>307,434.80</b>	<b>40.0%</b>	
<b>Individual Donors</b>			
<b>Total Individual Donors</b>	<b>17,827.04</b>	<b>2.3%</b>	<b>See Appendix 4</b>
<b>Income generation</b>			
<b>Internally generated funds</b>	<b>26,321.00</b>	<b>3.4%</b>	
<b>Total Donated Funds</b>	<b>768,230.138</b>	<b>100.0%</b>	
<b>Net Resource of Existing Swiss hand Programme</b>	<b>NET PROMIC RESOURCES (GH¢)</b>		<b>2020 Fund Increment (GH¢)</b>
Bawku West Programme	67,392.00		10,010.00
Bongo Programme	131,324.00		18,058.00
Bolgatanga Programme	171,957.00		10,812.00
<b>Total Net PROMIC resources</b>	<b>370,673.00</b>		<b>38,880.00</b>
<b>Total income for 2020</b>	<b>807,111.13</b>		
<b>Total Donations Plus Existing Funds</b>	<b>1,123,903.13</b>		



PERCENTAGE DISTRIBUTION OF WOM'S INCOME IN 2020





## APPENDIX

### Sources of funds and Donations, 2020

Project Area/Activity	Amount (Ghana Cedis)	% of Funds
-----------------------	----------------------------	------------

#### *Appendix 1 - ActionAid Ghana Activities*

<b>ActionAid Ghana</b>		
<i>POWER Project</i>	49,390.34	45.7%
<i>Women's Right/Sponsorship</i>	58,787.81	54.3%
<b>Total ActionAid Ghana</b>	<u>108,178.15</u>	100.0%

#### *Appendix 2 - OXFAM*

<i>ENOUGH Project</i>	214,969.14	69.7%
<i>COVID-19 Activities</i>	88,500.00	28.7%
<i>Support to Flood Victims</i>	5,000.00	1.6%
	<u>308,469.14</u>	100.00%

#### *Appendix 3 - Plan International Ghana*

COVID-19 Activities	62,652.91	91%
GTP Activities	6,500.00	9%
	<u>69,152.91</u>	100.0%

#### **Appendix 4-List of Individual donors**

Bailey Russell	7,289.10	Education/Vocational Skills
Prof. Parkins Grace	1,000.00	Education/Vocational Skills
ELIZABETH BOAKYE	196.00	Education/Vocational Skills
T B Dankwa	1,000.00	Education/Vocational Skills
Merete Baungaad	924.80	Education/Vocational Skills
Yaa Asantewa	393.00	Education/Vocational Skills
Rebecca Akorley	200.00	Education/Vocational Skills
Marie Duordoe and Mr. Nll Ankra	1,473.94	Education/Vocational Skills
Anonymous donors	575.50	Education/Vocational Skills



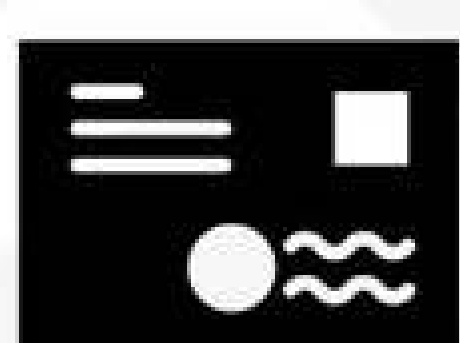
## INFORMATION ON WOM'S 2019 FINANCIALS

Hilda Mantebea Boye	205.00	Health
Williams Kelvin Asuman	50.00	Education/Vocational Skills
Patricia Kwafo M. Kwafo Ent. (Nana Adu)	1,000.00	Health
Cindy Bibariwiah	101.00	Health
Deborah Afulani	51.00	Health
Sadik Abubakari	100.00	Health
Cell cell Ent	100.00	Health
Duncan Delta Tulip	200.00	Health
Nartey Emefa Beauty	50.00	Health
Alidu	100.00	Health
Pro Atia Apusigah	97.50	Education/Vocational Skills
Winbil Aduku	97.50	Health
Dzifa Torviky	97.50	Health
Other (Flutter wave)	225.20	Education/Vocational Skills
Prof. Takyiwaa Manu	300.00	Education/Vocational Skills
Mrs. Limann	2,000.00	Education/Vocational Skills
<b>Total Individual Donors</b>	<b>17,827.04</b>	





**Ministries, Block D**  
**Bolgatanga, Upper East Region, Ghana, West Africa**



**P. O. Box 582**



**Womghana2000new@gmail.com**



**+233506549796 / 0382096333**



**www.womgh.org**



**@womghana**



**@wom\_ghana**